



Child Enrichment Center





THE HARBOR HOUSE STORY

At Harbor House, our vision is inspired by the dreams of the families we serve. Originally founded by parents who sought meaningful, fulfilling work for their children with intellectual disabilities, we now strive to offer even broader opportunities for growth, self-determination, and community contribution.

A transformative moment— Maria, the CEO of Harbor House, watching her grandmother and her son sharing joyful connections—sparked our commitment to intergenerational programming. We are building Kentucky's first-of-its-kind facility to unite seniors, adults with disabilities, and children of all abilities in shared spaces of enrichment and support.

More than just a service provider, Harbor House is a community leader dedicated to empowering people of all ages and abilities to live fulfilling lives. We invite you to join us in bringing children into the Harbor House community.

OUR MISSION

We are an intergenerational community that empowers individuals of all ages, abilities, and aspirations by providing opportunities through innovative vocational, health, and educational services.

THE HARBOR HOUSE VISION

When completed the campus will include the

1 INTERGENERATIONAL LIFE CENTER

- Adult Day Health Center
- Mail & Fulfillment Center
- Tech Learning Center
- Health & Wellness Center
- Music & Art Studios
- Event Venue Rentals
- Brooks Family Medical & KY Pharmacy
- Good Day Café, Art Gallery & Gift Shop
- Louisville Beauty Academy



2 CHILD ENRICHMENT CENTER

- Reggio Emilia-inspired Curriculum
- Indoor & Outdoor Playgrounds
- Therapy Room for OT, PT, and Speech Therapy

3 LONG-TERM RESPITE

4 TRANSPORTATION HUB

5 COMMUNITY WALKING TRACK



INTERGENERATIONAL LIFE CENTER

HARBOR HOUSE is a vibrant inter-generational community where people of all ages, abilities, and aspirations grow, learn, and thrive—together.

Harbor House offers innovative, wraparound services that empower individuals at every stage of life.

MORE THAN A PROGRAM

It's a movement toward inclusive belonging. A place where everyone is seen, heard, and deeply valued. Welcome to Harbor House—where lives are changed not by what we do for people, but by what we create with them.

WHAT MAKES US DIFFERENT?

We don't just serve individuals—*we connect them*. Here, children play alongside older adults, individuals with disabilities share meals and laughter with retirees, and every hallway hums with purpose and possibility. Our model is built on the belief that communities are stronger when generations support one another—and we see proof of that every single day.

"My heart has no idea how old your heart is."

—unknown



CHILD ENRICHMENT CENTER

Nurturing the Next Generation—
With Love, Curiosity, and Community.

Benefits

of Early Childhood High-Quality Enrichment:

- IQ increases up to 11 points
- Higher high school and college graduation rates
- Lower rates of grade repetition or special education designation
- 7–10× return through better life outcomes

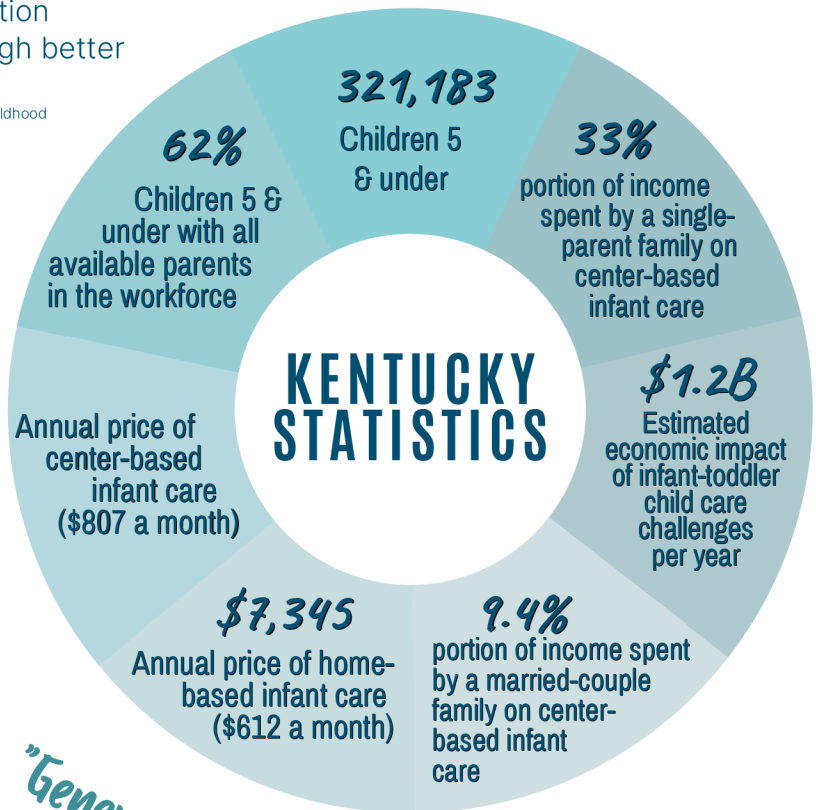
Barnett, W. S. Long-term effects of early childhood programs on cognitive and school outcomes

Benefits

of the Intergenerational Life Center for Children:

- 11 months ahead of their peers
- 46% less likely to begin using illegal drugs
- 27% less likely to begin using alcohol
- 52% less likely to skip school

** (Statistics reported by Generations United)**

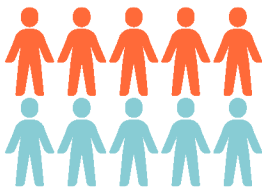


"Generations are linked by love,
heritage, and the stories we share." —Unknown

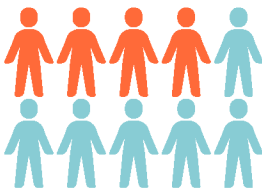
CHILDCARE STATISTICS



76% of parents report being on a waitlist for childcare, some as long as 2 years



Only 46% of Kentucky kindergarteners were considered kindergarten-ready in 2024



Kentucky has child care capacity for only 61% of children under 5



\$28.9 billion annual impact

Lack of quality care has a \$28.9 billion annual impact on families and reduces workplace productivity nationwide.

3x more likely job disruptions

Parents of young children with disabilities are three times more likely to experience job disruptions because of problems with child care.

18% report job impacts

Nearly 1 in 5, or 18 %, of parents of children with disabilities report leaving their job, not taking a job, or making significant changes to their job due to lack of child care.

70% professionals struggling with care

An estimate of 70% of child care professionals report struggling or having some difficulties caring for infants and toddlers with disabilities

34% reported difficulties finding child care

Families of young children with disabilities face greater obstacles: 34% reported difficulty finding child care, compared to 25% for parents of nondisabled children

"Legacy. What is legacy?"

It's planting the seeds in the garden you won't get to see."

Lin-Manuel Miranda

COMMUNITY IMPACT

47%

47% of the total population of Jefferson County, KY could potentially be served by the Intergenerational Life Center and Child Enrichment Center.



- Benefits of the ILC for Seniors

- Improved physical and mental health
- Improved sense of self-worth & independence
- Report less depression and isolation
- Delayed entrance into nursing homes
- Respite care gives independence from caretakers

43% of adults aged 60 and older report feeling lonely. Loneliness among heart failure patients has been associated with a nearly 4X increased risk of death.

Social Isolation and Loneliness in Older Adults 2020

- Benefits of the ILC for Children

Children who regularly interact with seniors are **11 months** ahead of their peers, report **lower anxiety**, and show **greater empathy** toward individuals with disabilities.

Intergenerational intervention programs were associated with an overall positive impact on health outcomes, such as depression, quality of life, and mental and physical health.

Ronzi et al. (2018) & Peters et al. (2021)

Youth in intergenerational mentoring programs are less likely to use substances or skip school.

These shared experiences foster lasting relationships and meaningful learning across generations.



INSIDE THE CEC



Includes:

- **8,326²**foot
- **7** Classrooms
- Small Classroom Ratios
- Indoor & Outdoor Playgrounds
- Hands-on Intergenerational Activities like Grand-Friends & Rock-A-Bye Time
- Child Care Workers Trained in the Care of Children with Special Needs*
- On-Site Therapy Gym



**OUTDOOR
PLAY AREA**

ON-SITE THERAPIES:

- Occupational
- Physical
- Speech

INDOOR PLAY AREA

ALL ABILITIES THERAPY GYM

SECURE CHECK IN

“The key is pairing great potential with great experience.”

Susan Curnan, Brandeis Professor and ED
Center for Youth and Communities

BENEFITS OF THE REGGIO EMILIA APPROACH

a child-centered educational philosophy focused on preschool and primary education.
CHILD-LED LEARNING, EXPLORATION, AND SELF-EXPRESSION



CHILD IMPACT



The Reggio Emilia approach is known for developing confident, capable, and compassionate learners prepared for future educational and life challenges.

- Promotes Self-Directed Learning
- Encourages Creativity and Expression
- Supports Social Development
- Builds Problem-Solving Skills
- Respects the Child's Environment
- Values Family and Community Involvement

"The wider the range of possibilities we offer children, the more intense will be their motivations and the richer their experiences."

– Loris Malaguzzi

Benefits

Improved School
Readiness &
Engagement

Impact on
Academic &
Social
Development

Parent &
Teacher
Satisfaction





ACCESSIBILITY IS KEY

The Child Enrichment Center is licensed to serve 108 children with and without disabilities from ages 6 weeks to Pre-K, and 20 school-aged children. The child-to-adult ratio in every room is limited to that of a center that serves only children with disabilities, so that any child may be cared for at Harbor House.

According to **CEO Maria Smith**, this is aimed at strengthening families that have children with and without disabilities, who usually must take their children to separate facilities. "So often these parents run from place to place to meet their disparate needs," she said.

"Our goal is to keep kids together or to help their parents juggle meeting their families' needs and maintaining their careers."



**HARBOR
HOUSE**

CHILD ENRICHMENT CENTER

Serves children 6 weeks
to 5 years of age with and
without disabilities in a
state-of-the-art
Child Enrichment Center



Now Enrolling

Intergenerational Programming ☒

Reggio Emilia Approach® ☒

Play-Based Learning ☒

Before and After School Care ☒

Indoor/ Outdoor Playground ☒

OT, PT, and Speech Therapy ☒

CCAP Accepted ☒



Register Now

CEC@HHLOU.ORG

WWW.HHLOU.ORG

502-709-9551



*Harbor House is
weaving a tapestry of
Love, Hope, and Empowerment
by embracing life together.*

Follow us on
social media



Donate



Sign up for our
Newsletter



**HARBOR
HOUSE**

HHLOU.ORG
502-719-0072

2233 LOWER HUNTERS TRACE, LOUISVILLE, KY 40216

PRINTED BY
THE MAIL &
FUFILLMENT
DEPT

